



State Head Injury Unit

Case Coordination and Community Therapy Services

The State Head Injury Unit (SHIU)

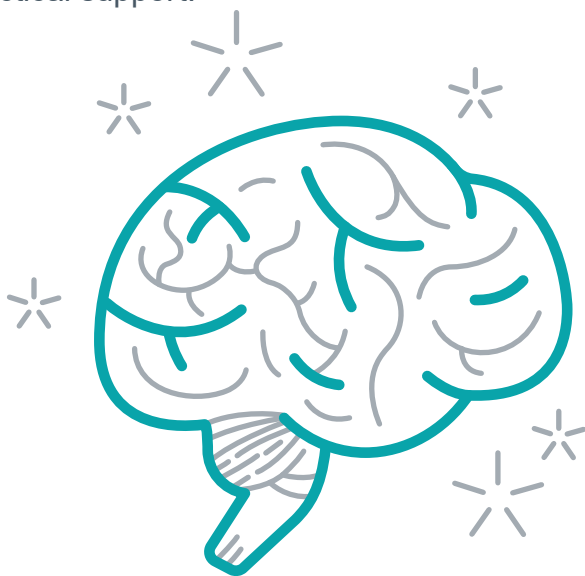
SHIU provides specialist Case Coordination and community therapy services to people with Acquired Brain Injury (ABI) and their families.

Contact with SHIU generally commences following discharge from hospital or outpatient therapy services.

Everyone seen at SHIU has contact with a Case Coordinator. Referrals are made for therapy services as required.

The length of program and services provided will be determined by the needs and goals identified.

SHIU also provide assistance to link people with community services that can provide further rehabilitation opportunities or long term practical support.



Case Coordination Service

Case Coordinators are Allied Health professionals with experience in rehabilitation. The Case Coordinator provides a consistent point of contact for the person with ABI and their family.

They provide a range of services including:

- Comprehensive needs assessment
- Education and information provision
- Guidance and support
- Monitoring
- Referral to therapy and support services

The Case Coordinator works closely with the person with an ABI and their family to identify needs and goals.

A rehabilitation plan is developed and implemented with SHIU therapy services or external providers where required.

Regular contact enables the plan to be altered as needs change over time.

Community Therapy Services

In conjunction with the Case Coordination service, the SHIU provides individual therapy programs where needed. The focus of therapy is to assist people to adapt to changes in their abilities in order to live as independently as possible, access the community, return to work and driving where possible and participate in leisure and recreational activities.

The therapy service includes:

- Occupational Therapy
- Physiotherapy
- Clinical Psychology
- Social Work
- Speech Pathology



Targeted therapy services are provided in the most relevant setting. This may be at home, at work, in the community or at the SHIU. ABI group education sessions and group therapy programs are also provided where appropriate.

A strong emphasis is placed on assisting people to access services and resources within their local community.

Who can receive services?

- People aged 16 to 65 years
- People who have sustained a recent Acquired Brain Injury e.g., trauma, severe concussion, stroke, tumour
- People with long-standing injuries may be considered in certain circumstances

Priority for services is determined at triage and is based on current services involved, severity of injury and individual need.

Individuals receiving compensation or NDIS who require ABI specific intervention will be considered on a case by case basis.



Referrals

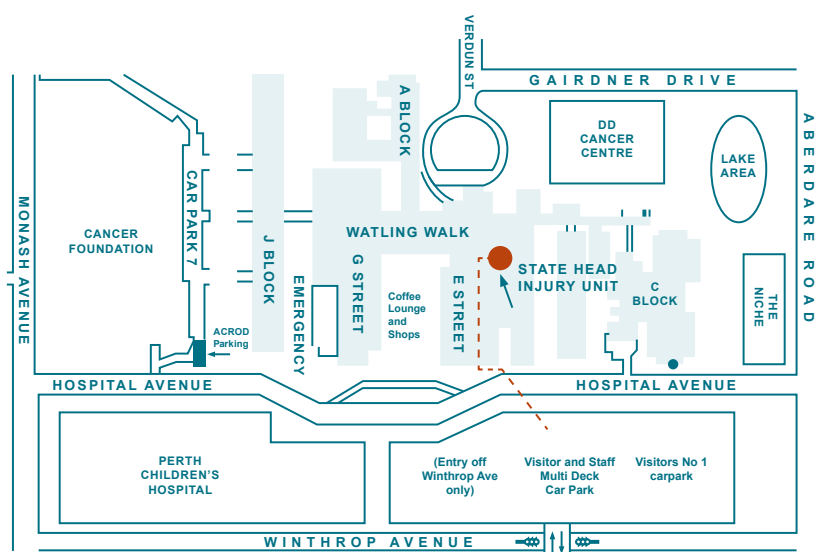
Referrals are accepted from: individuals with an acquired brain injury, family members, health professionals or community agencies.

How to contact us

- ☎ (08) 6457 4488
- 📠 (08) 6457 4489
- ✉ shiu@health.wa.gov.au
- 🌐 nmhs.health.wa.gov.au

Sir Charles Gairdner Hospital
Ground Floor, 'E' Block
Hospital Ave, Nedlands WA 6009

For up-to-date parking information,
<https://qeimc.health.wa.gov.au/travel-access/parking/visitor-parking/>



This document can be made available in alternative formats on request.